



Special points of interest:

- Shooting Camp on June 18-19 is Sold Out!!!
- Academy has boys & girls from 44 different high school programs!
- Ball Handling camp on July 9 is Sold Out!!!

Inside this issue:

Geno quote	2
Failure waits	2
3 Line Attack Drill	3
Ladder Shooting Drill	3
Edge is in the Mind	4

ELEVATE YOUR GAME

BRIAN BUTCH BASKETBALL



BALL HANDLING I & SHOOTING CAMP ARE SOLD OUT!!!



BRIAN BUTCH BASKETBALL

2018 APPLETON CAMPS

Youth Skills	June 18 th -19 th	9:00am - 11:00am	K-5 th	\$45
Shooting Camp	June 18 th -19 th	12:00pm - 3:00pm	3 rd -12 th	\$75
Shooting Lab	June 27 th -28 th	9:00am - 11:30am	5 th -12 th	\$65
NBA Dynamic Scoring	June 27 th -28 th	12:30pm - 3:00pm	5 th -12 th	\$75
Post Camp	July 9 th	9:00am- 12:00pm	5 th -12 th	\$45
Ball Handling	July 9 th	1:00pm - 4:00pm	3 rd -12 th	\$45
Competition Camp	July 12 th	9:00am - 12:00pm	3 rd -8 th	\$45
Perimeter Skills	July 12 th	1:00pm - 4:00pm	4 th -12 th	\$45
Competitive Shooting	July 18 th -19 th	9:00am - 11:30am	5 th -12 th	\$65
Shooting off Screens	July 18 th -19 th	12:30pm - 3:30pm	5 th -12 th	\$75
Ball Handling & Ball Screens	July 24 th	9:00am-12:00pm	5 th -12 th	\$45
Ball Handling 2	July 24 th	1:00pm-4:00pm	3 rd -12 th	\$45

BRIANBUTCHBASKETBALL@GMAIL.COM | WWW.BRIANBUTCHBASKETBALL.COM



SATELLITE CAMPS IN THE FOX VALLEY AREA

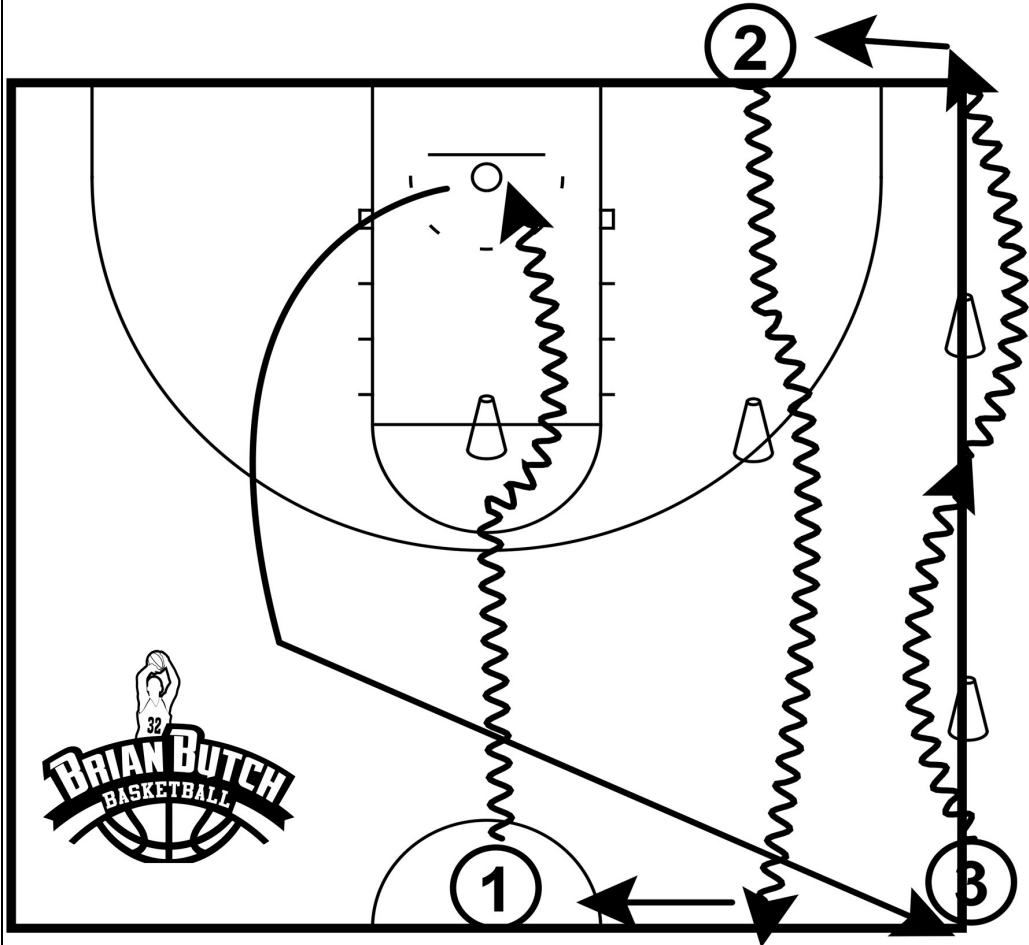
1. SHAWANO (JUNE 11-13)
2. ST. POINT PACELLI (JUNE 14 & JULY 17)
3. OCONTO FALLS (JUNE 20-21)
4. GREEN BAY NEW LUTHERAN (JUNE 21)
5. WAUPACA (JULY 23)

*Obstacles do not
block our path, they
are the path...*



**FAILURE WAITS
FOR ALL WHO
STAY ON SOME
SUCCESS
MADE
YESTERDAY...**

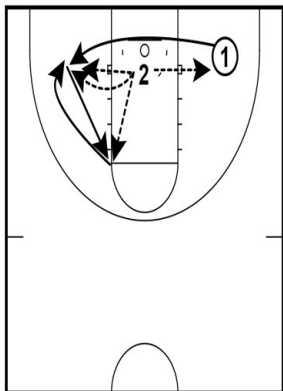
3 LINE ATTACK



Don't make long term decisions based on short term circumstances...

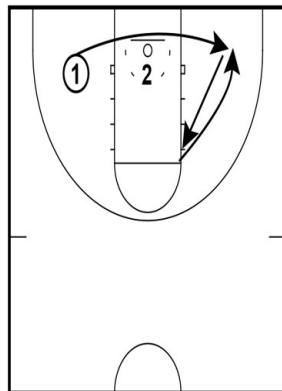
Brian Butch Basketball Academy

Ladder Shooting Drill Work



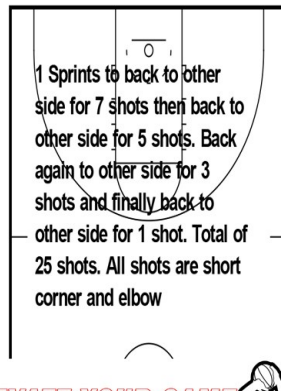
Player 1 takes 1 shot then sprints to other short corner, takes another shot then to elbow for shot and back to short corner for another shot (3 shots total)

Ladder Shooting Drill Work



1 sprints back to other side. Takes 5 shots total between short corner and elbow

Ladder Shooting Drill Work



1 Sprints to back to other side for 7 shots then back to other side for 5 shots. Back again to other side for 3 shots and finally back to other side for 1 shot. Total of 25 shots. All shots are short corner and elbow

ELEVATE YOUR GAME
BRIAN BUTCH BASKETBALL





Your greatest source of motivation is finding untapped potential within you. Your future isn't what lies ahead of you. It is what lies WITHIN you.



SATELLITE CAMPS IN THE STATE

1. JUNE 8 @ ABBOTSFORD
2. JUNE 14 @ ELEVA-STRUM
3. JUNE 22 @ SPARTA
4. JULY 10 & 11 @ WHITEHALL
5. JULY 10 @ ALMA-CENTER
6. JULY 11 @ WISCONSIN RAPIDS
7. JULY 17 @ TOMAHAWK
8. JULY 20 @ THREE LAKES
9. JULY 30-31 @ VERONA

REGISTRATION IS ON OUR WEBSITE!!!!

THE EDGE IS IN THE MIND

The better you think you are doing, the greater should be your cause for concern; the more self-satisfied you are with your accomplishments, your past achievements, your “right moves,” the less you should be.

The champion’s true edge exists solely in the mind, and over the years I have observed three attitudinal characteristics which are common to every superstar I have ever known. They are just as applicable in business as they are in the athletic arena. I have, in fact, adapted them to my own business career and they are the source from which I derive most of my drive and determination.

The first is the champions’ profound sense of dissatisfaction with their own accomplishments. They use any success, and victory, as a spur to greater ambition. Any goal that is attained immediately becomes the next step toward a greater more “unreachable” one.

The second is an ability to peak their performances, to get themselves up for major tournaments and events. No one can operate consistently at his or her highest level, yet the legends of any sports era always seem to perform at their best when the stakes are the greatest. This is particularly true in tennis and golf, perhaps the most mentally demanding of all the major sports, and why the major tournaments in both have always been dominated by a handful of players.

Finally is their ability to put their opponents away. This is referred to as “the killer instinct,” but that tells you more about the result than of what is going on mentally.

In the champion’s mind he is never ahead. He distorts reality to serve his competitive purpose. He is always coming from behind, even when the score indicates he is destroying his opponents. He never believes he is performing as well as he actually is.

Taken from:

What They Don't Teach You at Harvard Business School

By: Mark McCormack