



Special points of interest:

- Shooting Camp on June 18-19 is Sold Out!!!
- Academy has boys & girls from 44 different high school programs!
- Ball Handling camp on July 9 is Sold Out!!!



Inside this issue:

Know your Nos	2
George Raveling Quote	2
1x1 Roll The Ball	2
Off-Season	3
4 Chair 1x1	4
Eastern Michigan Shooting	4
Oshkosh Clinic	5

ELEVATE YOUR GAME

BRIAN BUTCH BASKETBALL



BALL HANDLING I & SHOOTING CAMP ARE SOLD OUT!!!

BRIAN BUTCH BASKETBALL

@BrianButchHoops @BrianButchHoops

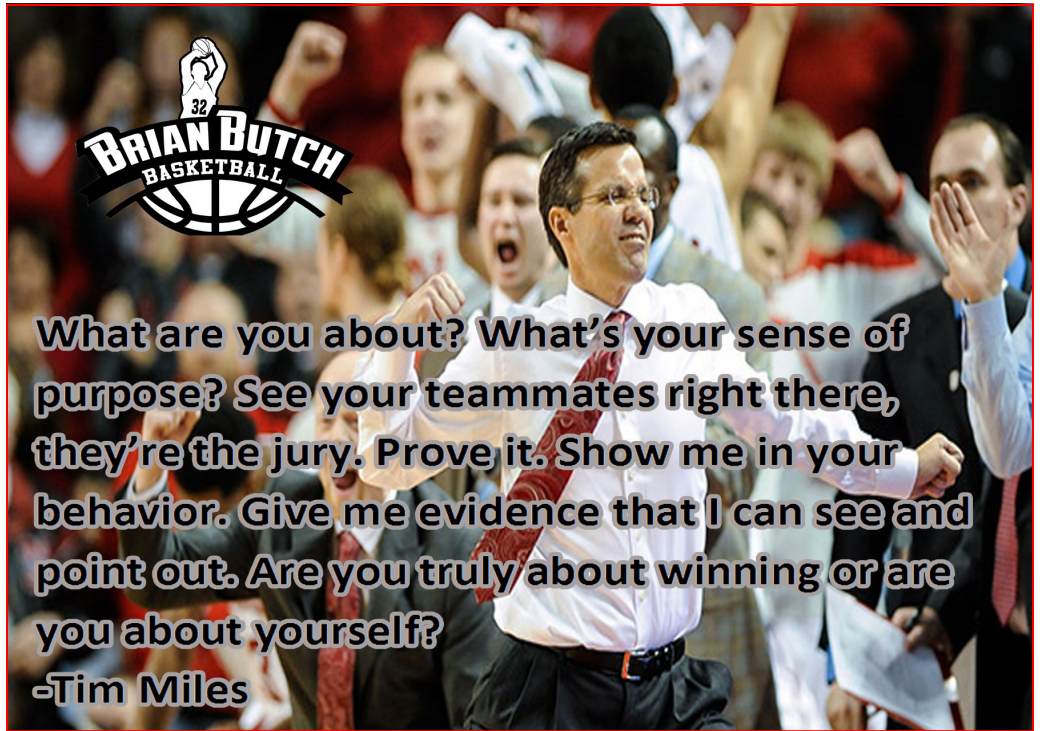
**BRIAN BUTCH BASKETBALL
 2018 APPLETON CAMPS**

Youth Skills	June 18 th -19 th	9:00am - 11:00am	K-5 th	\$45
Shooting Camp	June 18 th -19 th	12:00pm - 3:00pm	3 rd -12 th	\$75
Shooting Lab	June 27 th -28 th	9:00am - 11:30am	5 th -12 th	\$65
NBA Dynamic Scoring	June 27 th -28 th	12:30pm - 3:00pm	5 th -12 th	\$75
Post Camp	July 9 th	9:00am- 12:00pm	5 th -12 th	\$45
Ball Handling	July 9 th	1:00pm - 4:00pm	3 rd -12 th	\$45
Competition Camp	July 12 th	9:00am - 12:00pm	3 rd -8 th	\$45
Perimeter Skills	July 12 th	1:00pm - 4:00pm	4 th -12 th	\$45
Competitive Shooting	July 18 th -19 th	9:00am - 11:30am	5 th -12 th	\$65
Shooting off Screens	July 18 th -19 th	12:30pm - 3:30pm	5 th -12 th	\$75
Ball Handling & Ball Screens	July 24 th	9:00am-12:00pm	5 th -12 th	\$45
Ball Handling 2	July 24 th	1:00pm-4:00pm	3 rd -12 th	\$45

BRIANBUTCHBASKETBALL@GMAIL.COM | WWW.BRIANBUTCHBASKETBALL.COM



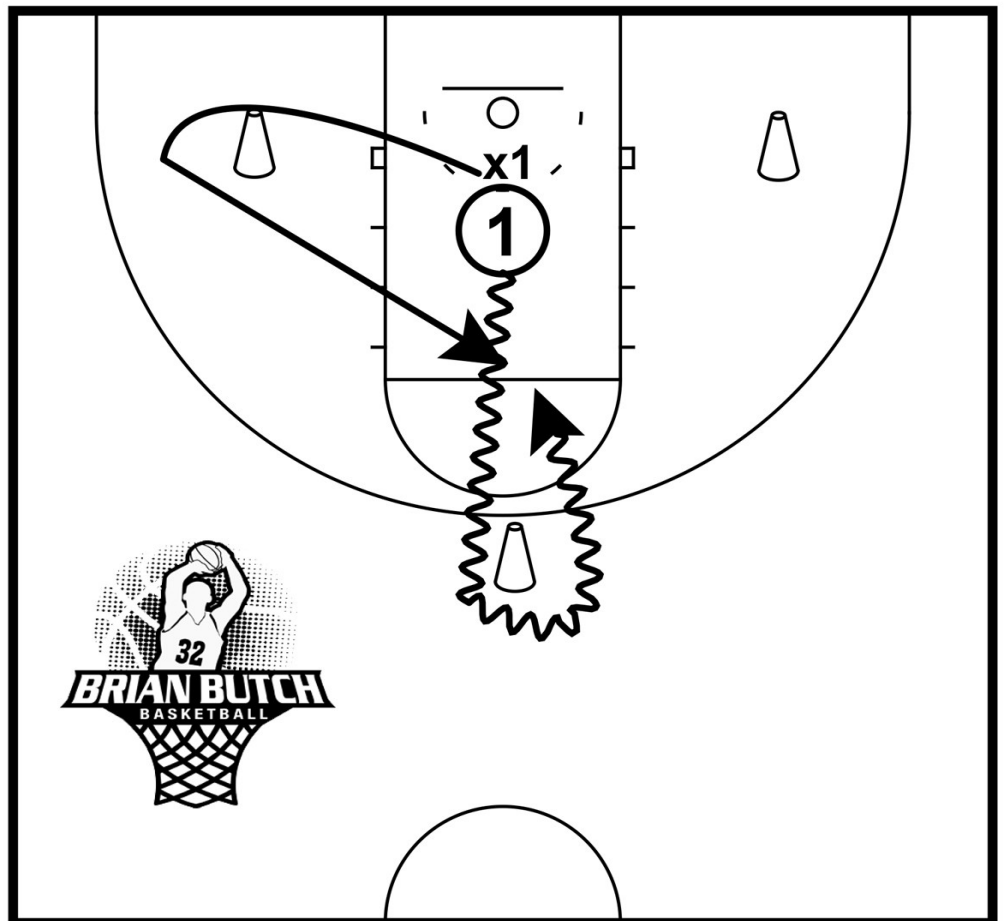
Fight the battles in front of you, not the ones behind you!!



What are you about? What's your sense of purpose? See your teammates right there, they're the jury. Prove it. Show me in your behavior. Give me evidence that I can see and point out. Are you truly about winning or are you about yourself?

-Tim Miles

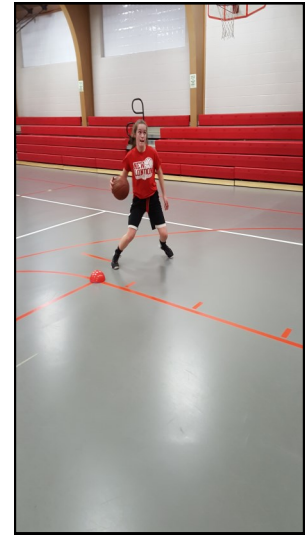
TRIANGLE 1X1



Leaders can't
demonstrate what they
DO NOT possess!
Toughness? Work
Ethic? Discipline? You
can only lead by
example if **YOU ARE**
the example!

SATELLITE CAMPS IN THE FOX VALLEY AREA

- 1. SHAWANO (JUNE 11-13)**
- 2. ST. POINT PACELLI (JUNE 14 & JULY 17)**
- 3. OCONTO FALLS (JUNE 20-21)**
- 4. GREEN BAY NEW LUTHERAN (JUNE 21)**
- 5. WAUPACA (JULY 23)**



*Regardless of your age, title,
or position on a team...
EVERYONE is a leader.
You're either a negative
leader or a positive leader.*

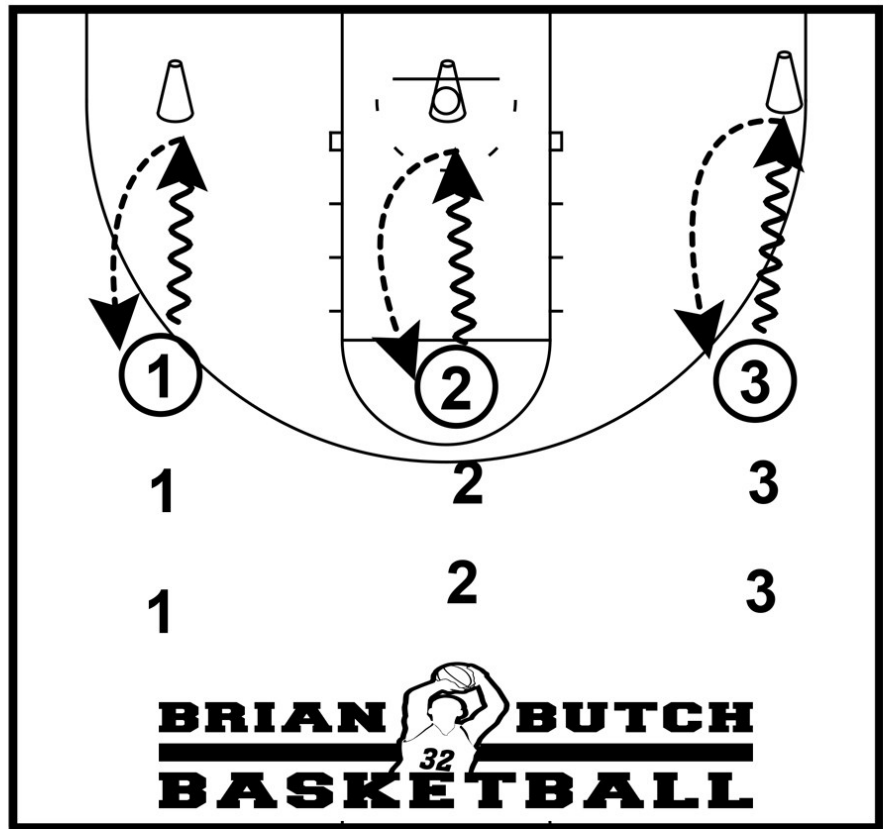




*Don't chase success.
Decide to make a
difference and
success will find you.*



3 LINE BALL HANDLING & PASSING



All 1s in one line, 2s in the middle line and 3s in the last line. First player in line will dribble to the cone either ball in the air or 1-2 step then front/rear pivot and pass to next player in their line. After the pass that player goes to end of the line. Player who receives the pass when be the ball handler

SATELLITE CAMPS IN THE STATE

1. JUNE 8 @ ABBOTSFORD
2. JUNE 14 @ ELEVA-STRUM
3. JUNE 22 @ SPARTA
4. JULY 10 & 11 @ WHITEHALL
5. JULY 10 @ ALMA-CENTER
6. JULY 11 @ WISCONSIN RAPIDS
7. JULY 17 @ TOMAHAWK
8. JULY 20 @ THREE LAKES
9. JULY 30-31 @ VERONA

REGISTRATION IS ON OUR WEBSITE!!!!